



## FULL CONE NOZZLE VKA

The full cone nozzle is characterized by full scattering cone. The uniform spraying of the medium ensures optimal distribution of drops.

### STANDARD – SPRAY ANGLE

60°, 90°, 120°  
other angles on request.



### POSSIBLE APPLICATIONS

air – and gas washing  
flue gas washing  
cleaning systems  
tank cooling  
foam control  
washing systems

### FIELD OF APPLICATION

steel production  
food industry  
chemistry  
pharma  
petrochemistry  
filling layer sprinkling  
energy technology  
dust control

### AVAILABLE IN THE FOLLOWING MATERIALS

#### Stainless Steel

1.4435 (X2 CrNiMo 18-14-3)

#### Plastics

\*PVC  
\*PTFE with glass fibers  
\*POM  
\*PP  
\*not available for type **VKA 01**

(polyvinyl chloride)  
(polytetrafluorethylene)  
(polyxymethylene)  
(polypropylene)

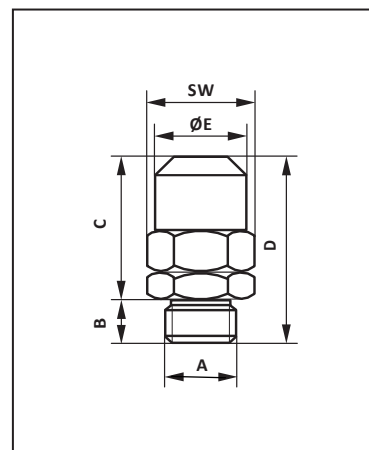
#### Non-ferrous material

brass

other material on request.

### DIMENSIONS

Type	A	B	C	D	Ø E	SW
		mm	mm	mm	mm mm	mm
VKA 01	R 1/8"	8	23.5	31.5	16	17
VKA 02	R 1/4"	9	31	40	18/19	19/20
VKA 03	R 3/8"	10	32.5	42.5	21	22
VKA 04	R 1/2"	13	41	54	26	27
VKA 05	R 3/4"	15	49	64	34	35/36
VKA 06	R 1"	17	61	78	39/40	40/41
VKA 07	R 1 1/4"	19	72	91	48	50/52
VKA 08	R 1 1/2"	19	89	108	58	60
VKA 09	R 2"	24	113	137	73	75
VKA 10	R 2 1/2"	27	135	162	93	95
VKA 11	R 3"	30	155	185	106	110



#### Jato-Düsenbau AG

Täschmattstrasse 23, CH-6015 Luzern, Switzerland, Tel: +41 41 269 88 30 Fax: +41 41 269 88 31 www.jato.ch info@jato.ch

VER.03/16



# FULL CONE NOZZLE VKA

## CAPACITY CHART OF FULL CONE NOZZLE

capacities in l/min of water by following pressures

type	thread	1 bar	2 bar	3 bar	4 bar (Test pressure)	6 bar	8 bar	10 bar
VKA01	R 1/8"			0.20	0.23	0.28	0.33	0.36
		0.27	0.38	0.47	0.54	0.66	0.76	0.85
		0.40	0.57	0.69	0.80	0.98	1.13	1.26
		0.60	0.85	1.04	1.20	1.47	1.70	1.90
		0.85	1.20	1.47	1.70	2.10	2.40	2.70
		1.20	1.70	2.10	2.40	2.95	3.40	3.80
VKA02	R 1/4"	1.50	2.10	2.60	3.00	3.70	4.20	4.70
		1.80	2.55	3.20	3.60	4.40	5.10	5.70
		2.50	3.50	4.30	5.00	6.10	7.10	7.90
		4.00	5.70	6.90	8.00	9.80	11.30	12.60
		5.20	7.30	9.00	10.40	12.70	14.70	16.50
		6.30	8.80	10.80	12.50	15.30	17.70	19.80
VKA03	R 3/8"	7.00	9.90	12.10	14.00	17.20	19.80	22.00
		8.80	12.40	15.20	17.50	21.50	24.80	27.70
		10.00	14.10	17.30	20.00	24.50	28.30	31.60
VKA04	R 1/2"	11.50	16.30	19.90	23.00	28.20	32.50	36.40
		14.50	20.50	25.00	29.00	35.50	41.00	46.00
		18.50	26.20	32.00	37.00	45.30	52.50	58.50
VKA05	R 3/4"	23.50	33.30	41.00	47.00	58.00	66.50	74.00
		30.00	42.50	52.00	60.00	73.50	85.00	95.00
		35.00	49.50	60.50	70.00	85.50	99.00	111.00
VKA06	R 1"	40.00	56.50	69.50	80.00	98.00	113.00	127.00
		58.00	82.00	101.00	116.00	142.00	164.00	183.00
		75.00	106.00	130.00	150.00	184.00	212.00	237.00

other material on request.

## FOR ORDERING WE NEED FOLLOWING INFORMATIONS

### Field of application

medium to spray (viscosity)  
fitting position / spray distance nozzle – spray area  
temperature range  
frequency range

### Nozzle specification

type of material  
desired spray angle  
nozzle type  
connection thread  
desired capacity (l/min, l/h)  
operating pressure (bar)